

# MILESTONE

EMIL  
CERAMICA



La collezione Milestone vuole mettere in risalto l'aspetto più semplice e naturale di una **pietra limestone ricca e strutturata**, presa nel suo stato originale.

milestone

*The Milestone collection focuses on the simplest, most natural version of a rich, structured limestone, taken in its original state. The various stone faces selected are uniform in characteristics, so when placed side by side they create flowing, tasteful patterns that highlight the stone's natural look to even greater effect. Available in the 30x60, 60x60, 45x90 and 80x80 sizes in 4 natural colours and also in the matt honed version, Milestone is a versatile, timeless stone, ideal for any context and for those who make a lifestyle of simplicity and naturalness.*

*La collection Milestone veut attirer l'attention sur l'aspect le plus simple et le plus naturel d'un calcaire riche et structuré, pris dans son état originel. Les différentes facettes sélectionnées de la pierre affichent des caractéristiques homogènes de sorte que, mises l'une après l'autre, elles puissent former des mouvements fluides et harmonieux, qui magnifient davantage l'aspect naturel de la pierre. Disponible dans les formats 30x60, 60x60, 45x90 et 80x80, en 4 couleurs naturelles et en version rodée mate, Milestone est une pierre polyvalente, hors du temps, idéale pour tous les styles et pour tous ceux qui font de la simplicité et du naturel leur propre mode de vie.*

*Die Kollektion Milestone inszeniert die Schlichtheit und Natürlichkeit eines facetten- und strukturreichen Kalksteins in seinem ursprünglichen Zustand. Die ausgewählten Gesteinsmotive weisen einheitliche optische Merkmale auf, so dass fließend ineinander übergehende, sehr natürlich anmutende Strukturen entstehen. Milestone ist in vier natürlichen Farben in den Formaten 30x60, 60x60, 45x90 und 80x80 erhältlich. Es steht auch eine matte geläppte Oberfläche zur Wahl. Die vielseitige, zeitlose Kollektion eignet sich für die unterschiedlichsten Raumwelten und einen Lifestyle, in dessen Mittelpunkt Schlichtheit und Natürlichkeit stehen.*

*La colección Milestone se propone poner de relieve el aspecto más sencillo y natural de una piedra caliza rica y estructurada, tomada en su estado original. Las varias caras de la piedra que se han seleccionado presentan características homogéneas entre sí de manera que, dispuestas una tras otra, puedan transmitir una impresión de dinamismo fluido y armonioso, remarcando más si cabe el aspecto natural de la propia piedra. Disponible en los formatos de 30 x 60, 60 x 60, 45 x 90 y 80 x 80, en cuatro colores naturales, así como en la versión mate y esmerilada en toda su superficie, Milestone es una piedra versátil, atemporal, ideal para toda clase de espacio y para quienes hacen de la sencillez y la naturalidad un estilo de vida.*

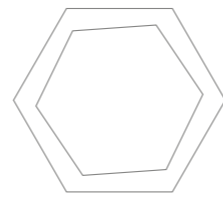
*Коллекция Milestone была создана для того, чтобы подчеркнуть самый простой и естественный вид богатого и структурированного известняка в его естественном состоянии. Различные воспроизводимые лица камня предлагают схожие друг с другом характеристики. Таким образом, укладываемая их рядом, создаются плавные и гармоничные мотивы, дополнительно подчеркивающие естественный вид этой породы камня. Milestone предлагается в форматах 30x60, 60x60, 45x90 и 80x80 см 4 натуральных цветов, и предусматривает также притертый матовый вариант. Коллекция воспроизводит универсальный камень, неподвластный времени. Он идеально вписывается в любое помещение и хорошо подходит для тех, кто выбрал простой и естественный стиль жизни.*



Le diverse facce della pietra che sono state selezionate presentano caratteristiche omogenee tra loro in modo che, disposte una dopo l'altra, possano disegnare movimenti fluidi ed armoniosi, che esaltano ancor più l'aspetto naturale della pietra stessa.

Disponibile nei formati **30x60, 60x60, 45x90 e 80x80** in **4 colori naturali** e anche nella versione lappata a campo pieno matt, Milestone è una pietra versatile, senza tempo, ideale per ogni tipo di ambiente e per coloro che fanno della semplicità e della naturalezza uno stile di vita.

# 01/ Grey

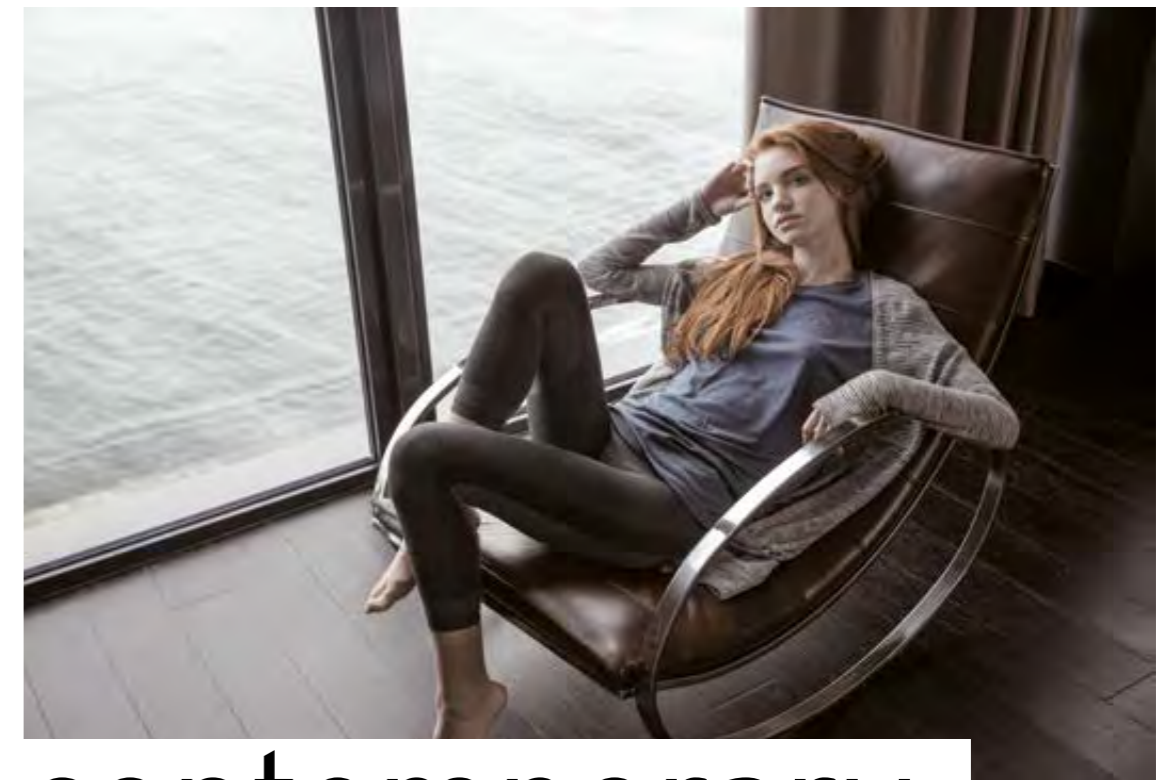


**R304Z8R** Esagona Bicolor Grey/Dark Grey Nat. 19,6x34,2 - 7<sup>11/16</sup> x 13<sup>7/16</sup>"



**804Z8R** Grey Nat. Rett. 80x80 - 31<sup>1/2</sup> x 31<sup>1/2</sup>"

**068PO** Gesso Nat. Brick Design 6x25 - 2<sup>3/8</sup> x 9<sup>13/16</sup>"



contemporary

**944Z8R** Grey Nat. Rett. 45x90 - 17<sup>11/16</sup>"x35<sup>7/16</sup>"

**06KA8** Seta Nat. Brick Design 6x25 - 2<sup>3/8</sup>"x9<sup>13/16</sup>"

**06KA9** Carbone Nat. Brick Design 6x25 Nat. - 2<sup>3/8</sup>"x9<sup>13/16</sup>"

# Natural finish

Full-bodied and pleasant to the touch



# 02/ Dark Grey



**784Z9P** Dark Grey Lapp. Rett. 79x79 - 31<sup>1/8</sup>" x 31<sup>1/8</sup>"  
**068P1** Calce Nat. Kotto Brick 6x25 - 2<sup>3/8</sup>" x 9<sup>13/16</sup>"



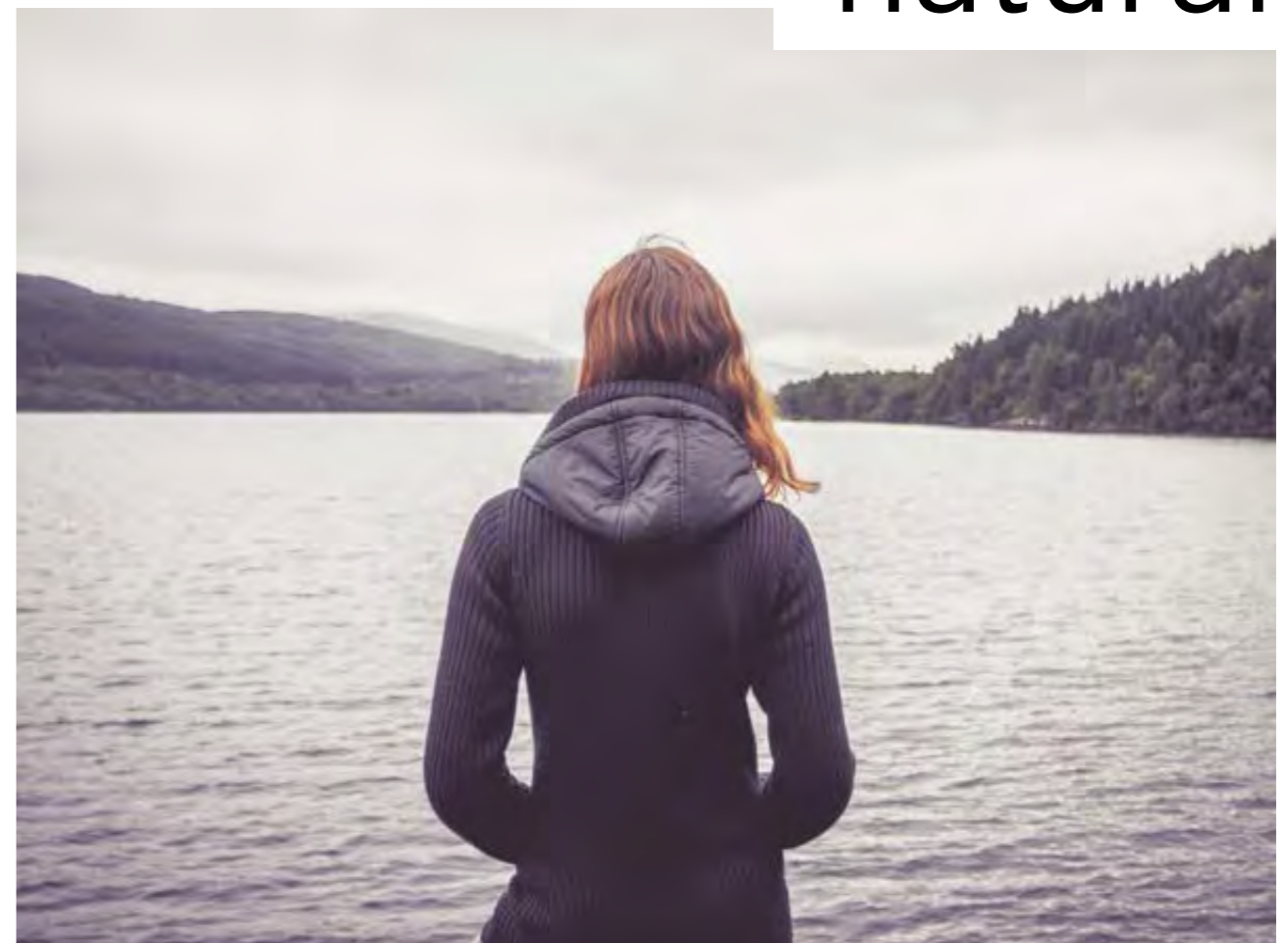
**784Z9P** Dark Grey Lapp. Rett. 79x79 - 31<sup>1/8</sup>" x 31<sup>1/8</sup>"  
**068P1** Calce Nat. Kotto Brick 6x25 - 2<sup>3/8</sup>" x 9<sup>13/16</sup>"



**804Z9R** Dark Grey Nat. Rett. 80x80 - 31<sup>1/8</sup>" x 31<sup>1/8</sup>"

**R304Z8R** Esagona Bicolor Grey/Dark Grey Nat. 19,6x34,2 - 7<sup>11/16</sup>" x 13<sup>7/16</sup>"

natural



# 03/ White

M634Z0R Listelli Sfalsati White Nat. 30x60 - 11<sup>13</sup>/<sub>16</sub>"x23<sup>5</sup>/<sub>8</sub>"







604ZOR White Nat. Rett. 60x60 - 23<sup>5/8</sup>" x 23<sup>5/8</sup>"

M634ZOR Listelli Sfalsati White Nat. 30x60 - 11<sup>13/16</sup>" x 23<sup>5/8</sup>"



**804Z0R** White Nat. Rett. 80x80 - 31<sup>1</sup>/<sub>2</sub>"x31<sup>1</sup>/<sub>2</sub>"  
**06KA6** Moka Nat. Brick Design 6x25 - 2<sup>3</sup>/<sub>8</sub>"x9<sup>13</sup>/<sub>16</sub>"

# Lappato finish

Soft and velvety to the touch  
Absorbing the light without reflecting it



# 04/ Sand

**Z304Z3R** Mosaico Tip Tap Sand Nat. 30x30 - 11<sup>13</sup>/<sub>16</sub>"x11<sup>13</sup>/<sub>16</sub>"



**604Z3R** Sand Nat. Rett. 60x60 - 23<sup>5</sup>/<sub>8</sub>"x23<sup>5</sup>/<sub>8</sub>"



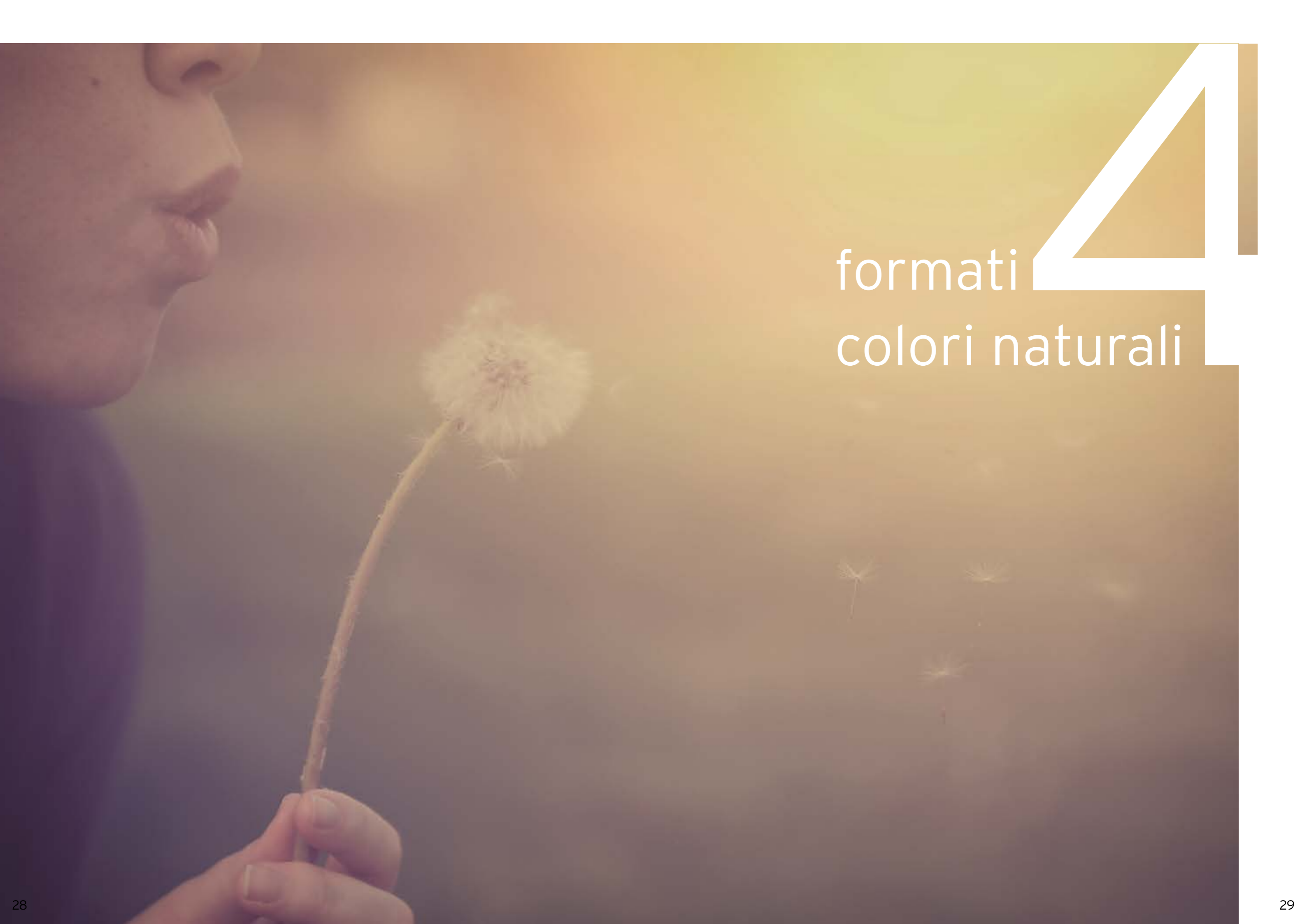
**604Z3R** Sand Nat. Rett. 60x60 - 23<sup>5/8</sup>"x23<sup>5/8</sup>"  
**634Z3R** Sand Nat. Rett. 30x60 - 11<sup>13/16</sup>"x23<sup>5/8</sup>"

**R304Z0R** Esagona Bicolor White/Sand Nat. 19,6x34,2 - 7<sup>11/16</sup>"x 13<sup>7/16</sup>"  
**Z304Z3R** Mosaico Tip Tap Sand Nat. 30x30 - 11<sup>13/16</sup>"x11<sup>13/16</sup>"



**804Z3R** Sand Nat. Rett. 80x80 - 31<sup>1</sup>/<sub>2</sub>"x31<sup>1</sup>/<sub>2</sub>"

**06KA3** Tortora Nat. Brick Design 6x25 - 2<sup>3</sup>/<sub>8</sub>"x9<sup>13</sup>/<sub>16</sub>"



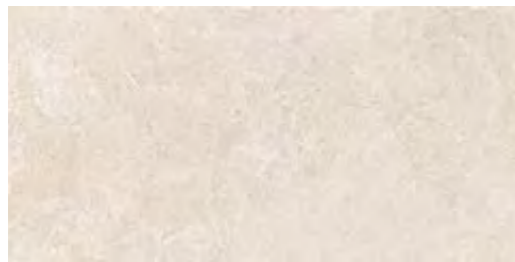
formati **4**  
colori naturali

FORMATI

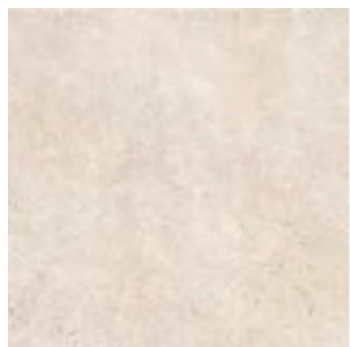
SIZES / FORMATS / FORMATE / TAMAÑOS / ФОРМАТЫ



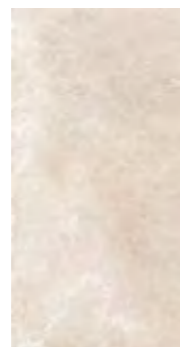
80x80 - 31 1/2" x 31 1/2" ● 78  
**804Z0R** White Nat. Rett. ● 78  
 79x79 - 31 1/8" x 31 1/8"  
**784Z0P** White Lapp. Rett. ● 81



45x90 - 17 11/16" x 35 7/16" ● 74  
**944Z0R** White Nat. Rett. ● 74  
 44,4x89 - 17 1/2" x 35 1/8"  
**934Z0P** White Lapp. Rett. ● 781



60x60 - 23 5/8" x 23 5/8" ● 662  
**604Z0R** White Nat. Rett. ● 662  
 59x59 - 23 1/4" x 23 1/4" **U<sub>3</sub>P<sub>3</sub>E<sub>3</sub>C<sub>2</sub>**  
**594Z0P** White Lapp. Rett. ● 771



30x60 - 11 13/16" x 23 5/8" ● 61  
**634Z0R** White Nat. Rett. ● 61  
 29,4x59 - 11 9/16" x 23 1/4"  
**294Z0P** White Lapp. Rett. ● 73

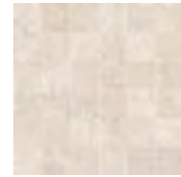
Si consiglia la posa con fuga 2 mm. - Laying with a 2 mm-joint is recommended.  
 Pose recommandée avec joints de 2 mm. - Es wird eine Fugenbreite von 2 mm empfohlen.  
 Se recomienda la colocación con juntas de 2 mm. - Рекомендуется укладка с швом 2 мм.

DECORI

DECORS / DECORS / DEKORE / DECORADOS / ДЕКОРЫ

Mosaico 5x5\*

Tessera - Chip 4,8x4,8 - 1 7/8" x 1 7/8"



30x30 - 11 13/16" x 11 13/16" ● 93  
**I304Z0R** White Nat. ● 93  
**I304Z0P** White Lapp. ● 98

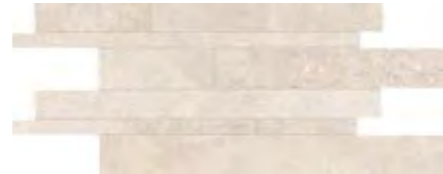
Mosaico Tip Tap\*

Tessera - Chip  
 2,85x2,85 - 1 1/8" x 1 1/8" / 2,4x2,4 - 15/16" x 15/16"



30x30 - 11 13/16" x 11 13/16" ● 100  
**Z304Z0R** White Nat. ● 100  
**Z304Z0P** White Lapp. ● 101

Listelli sfalsati\*



30x60 - 11 13/16" x 23 5/8" ● 87  
**M634Z0R** White Nat. ● 87  
 29,4x59 - 11 9/16" x 23 1/4"  
**M294Z0P** White Lapp. ● 89

Esagona Bicolor\*

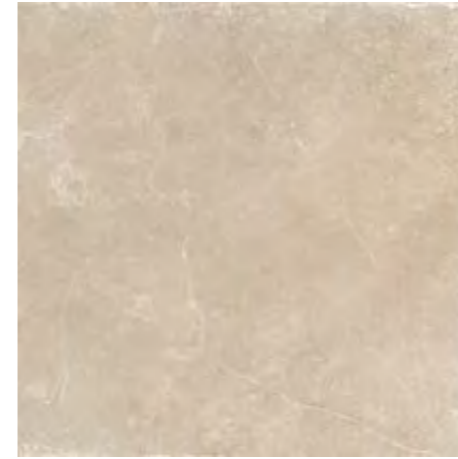


19,6x34,2 - 7 11/16" x 13 7/16" ● 107  
**R304Z0R** White / Sand ● 107

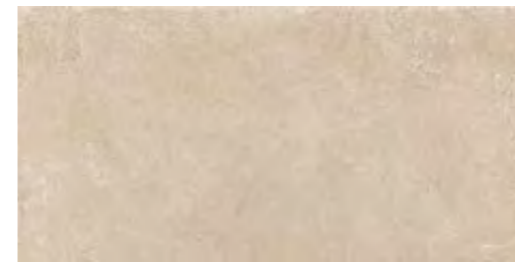
\* Su rete in fibra - On fibre mesh backing  
 Sur filet en fibre de verre - Auf Glasfasernetz  
 Sobre malla de fibra - На волоконной сетке

FORMATI

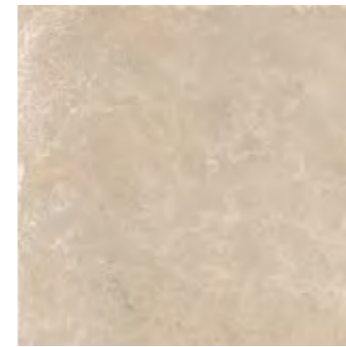
SIZES / FORMATS / FORMATE / TAMAÑOS / ФОРМАТЫ



80x80 - 31 1/2" x 31 1/2" ● 78  
**804Z3R** Sand Nat. Rett. ● 78  
 79x79 - 31 1/8" x 31 1/8"  
**784Z3P** Sand Lapp. Rett. ● 81



45x90 - 17 11/16" x 35 7/16" ● 74  
**944Z3R** Sand Nat. Rett. ● 74  
 44,4x89 - 17 1/2" x 35 1/8"  
**934Z3P** Sand Lapp. Rett. ● 781



60x60 - 23 5/8" x 23 5/8" ● 662  
**604Z3R** Sand Nat. Rett. ● 662  
 59x59 - 23 1/4" x 23 1/4" **U<sub>3</sub>P<sub>3</sub>E<sub>3</sub>C<sub>2</sub>**  
**594Z3P** Sand Lapp. Rett. ● 771



30x60 - 11 13/16" x 23 5/8" ● 61  
**634Z3R** Sand Nat. Rett. ● 61  
 29,4x59 - 11 9/16" x 23 1/4"  
**294Z3P** Sand Lapp. Rett. ● 73

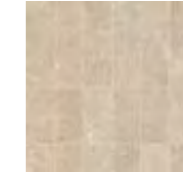
Si consiglia la posa con fuga 2 mm. - Laying with a 2 mm-joint is recommended.  
 Pose recommandée avec joints de 2 mm. - Es wird eine Fugenbreite von 2 mm empfohlen.  
 Se recomienda la colocación con juntas de 2 mm. - Рекомендуется укладка с швом 2 мм.

DECORI

DECORS / DECORS / DEKORE / DECORADOS / ДЕКОРЫ

Mosaico 5x5\*

Tessera - Chip 4,8x4,8 - 1 7/8" x 1 7/8"



30x30 - 11 13/16" x 11 13/16" ● 93  
**I304Z3R** Sand Nat. ● 93  
**I304Z3P** Sand Lapp. ● 98

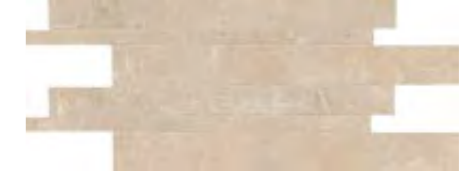
Mosaico Tip Tap\*

Tessera - Chip  
 2,85x2,85 - 1 1/8" x 1 1/8" / 2,4x2,4 - 15/16" x 15/16"



30x30 - 11 13/16" x 11 13/16" ● 100  
**Z304Z3R** Sand Nat. ● 100  
**Z304Z3P** Sand Lapp. ● 101

Listelli sfalsati\*



30x60 - 11 13/16" x 23 5/8" ● 87  
**M634Z3R** Sand Nat. ● 87  
 29,4x59 - 11 9/16" x 23 1/4"  
**M294Z3P** Sand Lapp. ● 89

Esagona Bicolor\*



19,6x34,2 - 7 11/16" x 13 7/16" ● 107  
**R304Z0R** White / Sand ● 107

\* Su rete in fibra - On fibre mesh backing  
 Sur filet en fibre de verre - Auf Glasfasernetz  
 Sobre malla de fibra - На волоконной сетке





**FORMATI**

SIZES / FORMATS / FORMATE / TAMAÑOS / ФОРМАТЫ



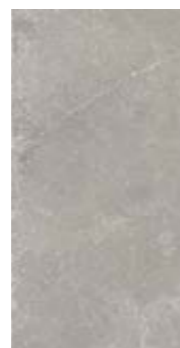
80x80 - 31<sup>1/2</sup>"x31<sup>1/2</sup>"  
**804Z8R** Grey Nat. Rett. ● 78  
 79x79 - 31<sup>1/8</sup>"x31<sup>1/8</sup>"  
**784Z8P** Grey Lapp. Rett. ● 81



45x90 - 17<sup>11/16</sup>"x35<sup>7/16</sup>"  
**944Z8R** Grey Nat. Rett. ● 74  
 44,4x89 - 17<sup>1/2</sup>"x35<sup>1/6</sup>"  
**934Z8P** Grey Lapp. Rett. ● 781



60x60 - 23<sup>5/8</sup>"x23<sup>5/8</sup>"  
**604Z8R** Grey Nat. Rett. ● 662  
 59x59 - 23<sup>1/4</sup>"x23<sup>1/4</sup>" **U<sub>3</sub>P<sub>3</sub>E<sub>3</sub>C<sub>2</sub>**  
**594Z8P** Grey Lapp. Rett. ● 771



30x60 - 11<sup>13/16</sup>"x23<sup>5/8</sup>"  
**634Z8R** Grey Nat. Rett. ● 61  
 29,4x59 - 11<sup>9/16</sup>"x23<sup>1/4</sup>"  
**294Z8P** Grey Lapp. Rett. ● 73

**DECORI**

DECORS / DECORS / DEKORE / DECORADOS / ДЕКОРЫ

**Mosaico 5x5\***

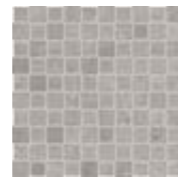
Tessera - Chip 4,8x4,8 - 1<sup>7/8</sup>"x1<sup>7/8</sup>"



30x30 - 11<sup>13/16</sup>"x11<sup>13/16</sup>"  
**I304Z8R** Grey Nat. ● 93  
**I304Z8P** Grey Lapp. ● 98

**Mosaico Tip Tap\***

Tessera - Chip  
 2,85x2,85 - 1<sup>1/8</sup>"x1<sup>1/8</sup>" / 2,4x2,4 - 1<sup>5/16</sup>"x1<sup>5/16</sup>"



30x30 - 11<sup>13/16</sup>"x11<sup>13/16</sup>"  
**Z304Z8R** Grey Nat. ● 100  
**Z304Z8P** Grey Lapp. ● 101

**Listelli sfalsati\***



30x60 - 11<sup>13/16</sup>"x23<sup>5/8</sup>"  
**M634Z8R** Grey Nat. ● 87  
 29,4x59 - 11<sup>9/16</sup>"x23<sup>1/4</sup>"  
**M294Z8P** Grey Lapp. ● 89

**Esagona Bicolor\***



19,6x34,2 - 7<sup>11/16</sup>"x13<sup>7/16</sup>"  
**R304Z8R** Grey / Dark Grey ● 107

\* Su rete in fibra - On fibre mesh backing  
 Sur filet en fibre de verre - Auf Glasfasernetz  
 Sobre malla de fibra - На волоконной сетке

Si consiglia la posa con fuga 2 mm. - Laying with a 2 mm-joint is recommended.  
 Pose recommandée avec joints de 2 mm. - Es wird eine Fugenbreite von 2 mm empfohlen.  
 Se recomienda la colocación con juntas de 2 mm. - Рекомендуется укладка с швом 2 мм.



**FORMATI**

SIZES / FORMATS / FORMATE / TAMAÑOS / ФОРМАТЫ



80x80 - 31<sup>1/2</sup>"x31<sup>1/2</sup>"  
**804Z9R** Dark Grey Nat. Rett. ● 78  
 79x79 - 31<sup>1/8</sup>"x31<sup>1/8</sup>"  
**784Z9P** Dark Grey Lapp. Rett. ● 81



45x90 - 17<sup>11/16</sup>"x35<sup>7/16</sup>"  
**944Z9R** Dark Grey Nat. Rett. ● 74  
 44,4x89 - 17<sup>1/2</sup>"x35<sup>1/6</sup>"  
**934Z9P** Dark Grey Lapp. Rett. ● 781



60x60 - 23<sup>5/8</sup>"x23<sup>5/8</sup>"  
**604Z9R** Dark Grey Nat. Rett. ● 662  
 59x59 - 23<sup>1/4</sup>"x23<sup>1/4</sup>" **U<sub>3</sub>P<sub>3</sub>E<sub>3</sub>C<sub>2</sub>**  
**594Z9P** Dark Grey Lapp. Rett. ● 771



30x60 - 11<sup>13/16</sup>"x23<sup>5/8</sup>"  
**634Z9R** Dark Grey Nat. Rett. ● 61  
 29,4x59 - 11<sup>9/16</sup>"x23<sup>1/4</sup>"  
**294Z9P** Dark Grey Lapp. Rett. ● 73

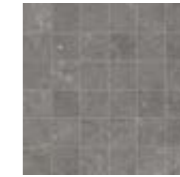
Si consiglia la posa con fuga 2 mm. - Laying with a 2 mm-joint is recommended.  
 Pose recommandée avec joints de 2 mm. - Es wird eine Fugenbreite von 2 mm empfohlen.  
 Se recomienda la colocación con juntas de 2 mm. - Рекомендуется укладка с швом 2 мм.

**DECORI**

DECORS / DECORS / DEKORE / DECORADOS / ДЕКОРЫ

**Mosaico 5x5\***

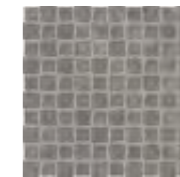
Tessera - Chip 4,8x4,8 - 1<sup>7/8</sup>"x1<sup>7/8</sup>"



30x30 - 11<sup>13/16</sup>"x11<sup>13/16</sup>"  
**I304Z9R** Dark Grey Nat. ● 93  
**I304Z9P** Dark Grey Lapp. ● 98

**Mosaico Tip Tap\***

Tessera - Chip  
 2,85x2,85 - 1<sup>1/8</sup>"x1<sup>1/8</sup>" / 2,4x2,4 - 1<sup>5/16</sup>"x1<sup>5/16</sup>"



30x30 - 11<sup>13/16</sup>"x11<sup>13/16</sup>"  
**Z304Z9R** Dark Grey Nat. ● 100  
**Z304Z9P** Dark Grey Lapp. ● 101

**Listelli sfalsati\***



30x60 - 11<sup>13/16</sup>"x23<sup>5/8</sup>"  
**M634Z9R** Dark Grey Nat. ● 87  
 29,4x59 - 11<sup>9/16</sup>"x23<sup>1/4</sup>"  
**M294Z9P** Dark Grey Lapp. ● 89

**Esagona Bicolor\***



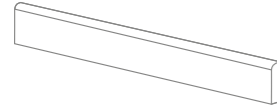
19,6x34,2 - 7<sup>11/16</sup>"x13<sup>7/16</sup>"  
**R304Z8R** Grey / Dark Grey ● 107

\* Su rete in fibra - On fibre mesh backing  
 Sur filet en fibre de verre - Auf Glasfasernetz  
 Sobre malla de fibra - На волоконной сетке

Si consiglia la posa con fuga 2 mm. - Laying with a 2 mm-joint is recommended.  
 Pose recommandée avec joints de 2 mm. - Es wird eine Fugenbreite von 2 mm empfohlen.  
 Se recomienda la colocación con juntas de 2 mm. - Рекомендуется укладка с швом 2 мм.

## PEZZI SPECIALI

TRIMS / PIECES SPECIALES / FORMTEILE / PIEZAS ESPECIALES / СПЕЦИАЛЬНЫЕ ИЗДЕЛИЯ

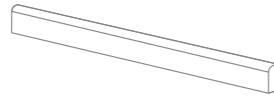


**BATTISCOPA - SKIRTING**  
7,5x60 - 2<sup>15/16</sup>"x23<sup>5/8</sup>"  
Pcs. Box. 15 - ML x Box 9

- 874Z0R** White Nat. Rett. ● 11
- 874Z3R** Sand Nat. Rett. ● 11
- 874Z8R** Grey Nat. Rett. ● 11
- 874Z9R** Dark Grey Nat. Rett. ● 11

7,3x59 - 2<sup>7/8</sup>"x23<sup>1/4</sup>"  
Pcs. Box. 15 - ML x Box 8,85

- 874Z0P** White Lapp. Rett. ● 13
- 874Z3P** Sand Lapp. Rett. ● 13
- 874Z8P** Grey Lapp. Rett. ● 13
- 874Z9P** Dark Grey Lapp. Rett. ● 13

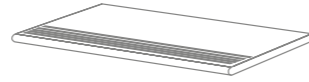


**BATTISCOPA - SKIRTING**  
4,6x60 - 1<sup>13/16</sup>"x23<sup>5/8</sup>"  
Pcs. Box. 20 - ML x Box 12

- B14Z0R** White Nat. Rett. ● 11
- B14Z3R** Sand Nat. Rett. ● 11
- B14Z8R** Grey Nat. Rett. ● 11
- B14Z9R** Dark Grey Nat. Rett. ● 11

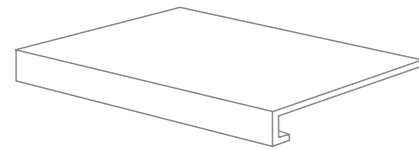
4,6x59 - 1<sup>13/16</sup>"x23<sup>1/4</sup>"  
Pcs. Box. 20 - ML x Box 11,80

- B14Z0P** White Lapp. Rett. ● 13
- B14Z3P** Sand Lapp. Rett. ● 13
- B14Z8P** Grey Lapp. Rett. ● 13
- B14Z9P** Dark Grey Lapp. Rett. ● 13



**GRADINO - STAIR TREAD**  
33x60 - 12<sup>15/16</sup>"x23<sup>5/8</sup>"  
Pcs. Box. 6 - ML x Box 3,60

- 714Z0R** White Nat. Rett. ● 61
- 714Z3R** Sand Nat. Rett. ● 61
- 714Z8R** Grey Nat. Rett. ● 61
- 714Z9R** Dark Grey Nat. Rett. ● 61

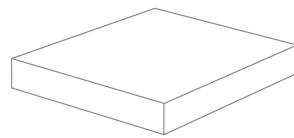


**GRADONE - STEP**  
33x60x3,2x3,2 - 12<sup>15/16</sup>"x23<sup>5/8</sup>"x1<sup>1/4</sup>"x1<sup>1/4</sup>"  
Pcs. Box. 4 - ML x Box 2,40

- 1C4Z0R** White Nat. Rett. ● 79
- 1C4Z3R** Sand Nat. Rett. ● 79
- 1C4Z8R** Grey Nat. Rett. ● 79
- 1C4Z9R** Dark Grey Nat. Rett. ● 79

33x59x3,2x3,2 - 12<sup>15/16</sup>"x23<sup>1/4</sup>"x1<sup>1/4</sup>"x1<sup>1/4</sup>"  
Pcs. Box. 4 - ML x Box 2,36

- 1C4Z0P** White Lapp. Rett. ● 81
- 1C4Z3P** Sand Lapp. Rett. ● 81
- 1C4Z8P** Grey Lapp. Rett. ● 81
- 1C4Z9P** Dark Grey Lapp. Rett. ● 81



**ANGOLARE - CORNER TILE**  
33x33x3,2x3,2 - 12<sup>15/16</sup>"x12<sup>15/16</sup>"x1<sup>1/4</sup>"x1<sup>1/4</sup>"  
Pcs. Box. 2 - ML x Box 0,66

- 1A4Z0R** White Nat. Rett. ● 83
- 1A4Z3R** Sand Nat. Rett. ● 83
- 1A4Z8R** Grey Nat. Rett. ● 83
- 1A4Z9R** Dark Grey Nat. Rett. ● 83

- 1A4Z0P** White Lapp. Rett. ● 85
- 1A4Z3P** Sand Lapp. Rett. ● 85
- 1A4Z8P** Grey Lapp. Rett. ● 85
- 1A4Z9P** Dark Grey Lapp. Rett. ● 85



**ELEMENTO A "L"**  
L SHAPED PIECE  
15x60x5 - 5<sup>7/8</sup>"x23<sup>5/8</sup>"x1<sup>15/16</sup>"  
Pcs. Box. 4 - ML x Box 2,40

- 994Z0R** White Nat. Rett. ● 43
- 994Z3R** Sand Nat. Rett. ● 43
- 994Z8R** Grey Nat. Rett. ● 43
- 994Z9R** Dark Grey Nat. Rett. ● 43

Dry - Pressed Ceramic Tiles ISO 13006 Annex G - UNI EN 14411 Annex G - Bla GL

CARATTERISTICHE TECNICHE		NORMA	VALORI	
Technical Features - Características Técnicas - Technische Eigenschaften Technische Eigenschaften - Características Técnicas - Технические Характеристики		Standard - Norme Norm - Norma - Norma	Value - Valeur Vorgabe - Valor - Средние	
	<b>PLANARITÀ</b> Flatness - Planéité - Ebenflächigkeit - Planaridad - Плоскостность	UNI EN ISO 10545/2	± 0,26% / ± 1,5MM	
		ASTM C485 WARPAGE	-	
		CALIBRATED ± 0,75% (MAX ± 0,09 IN)	-	
		RECTIFIED ± 0,40% (MAX ± 0,05 IN-SIZE ≤ 60CM) (MAX ± 0,07 IN-SIZE > 60CM)	± 0,25% (MAX ± 0,05 IN-SIZE ≤ 60CM) (MAX ± 0,07 IN-SIZE > 60CM)	
	<b>ASSORBIMENTO D'ACQUA (VALORE MEDIO IN %)</b> Water absorption (Average value expressed in %) - Absorption d'eau (Valeur moyenne en %) Wasseraufnahme (Durchschnittswert in %) - Absorción de agua (Valor medio en %) Поглощение воды	UNI EN ISO 10545/3 ≤ 0,5 % ASTM C373	CONFORME COMPLIANT	
	<b>RESISTENZA ALLA FLESSIONE</b> Modulus of rupture - Resistance a la flexion - Biegefestigkeit Resistencia a la flexion - Прочность на изгиб	UNI EN ISO 10545/4	≥ 50 N/MM <sup>2</sup>	
		<b>FORZA DI ROTTURA</b> Breaking strength - Résistance à la rupture - Bruchlast Resistencia a la rotura - Разрывное усилие	UNI EN ISO 10545/4 ASTM C648	≥ 2000 N 700 LBS
	<b>RESISTENZA AL GELO</b> Frost resistance - Résistance au gel - Frostbeständigkeit - Resistencia a las heladas - Морозостойкость	UNI EN ISO 10545/12 ASTM C1026	CONFORME UNAFFECTED	
	<b>RESISTENZA CHIMICA</b> <b>AD ALTE E BASSE CONCENTRAZIONI DI ACIDI E BASI</b> Chemical resistance to high and low acid and basic concentrations Résistance chimique aux hautes et basses concentrations d'acides et de bases Chemikalienfestigkeit bei hohen und niedrigen Konzentrationen von Säuren und Basen Resistencia química con concentraciones altas y bajas de ácidos y bases Химическая стойкость к высоким и низким концентрациям кислот и щелочей	UNI EN ISO 10545/13 ASTM C-650	GA - GLA - GHA UNAFFECTED	
	<b>RESISTENZA ALLE MACCHIE</b> Stain resistance - Résistance aux taches - Fleckenbeständigkeit Resistencia a las manchas - Стойкость к образованию пятен	UNI EN ISO 10545/14 CTI 81-7D	5 NO EVIDENT VARIATION	
	<b>COEFFICIENTE DI ATTRITO</b> Slip resistance - Coefficient de glissement - Rutschfestigkeit Barfußbereich Coeficiente de atrito medio - Коэффициент трения	DIN 51130	<b>NATURALE</b> R10	<b>LAPPATO</b> -
		DIN 51097	B (A+B)	-
		ANSI A 137.1 - 2012 DCOF (SECTION 9.6)	WET ≥ 0,42	-
		B.C.R.A.	≥ 0,40	-

Per maggiori chiarimenti sui dati tecnici e sulla garanzia consultare il catalogo generale in vigore. - For further information on technical specifications, please consult our up-dated general catalogue. - Pour toutes informations supplémentaires sur les données techniques et sur les garanties, veuillez consulter le catalogue général en vigueur. - Für weitere Informationen über technische Daten und Garantie beziehen sie sich bitte auf den aktuellen Gesamtkatalog. - Para ulteriores informaciones sobre los datos técnicos y la garantía, vease el catalogo general en vigor. - Более подробную информацию о технических данных и гарантии смотрите в действующем сводном катал.



Articolo	Formato (cm)	Spessore (mm)	Pz. x Mq.	Pz. x Scat.	Mq. x Scat.	Peso x Scat.	Scat. x Pal.	Mq. x Pal.	Peso x Pal.
Item	Size (cm)	Thickness (mm)	Pieces x Sqm	Pieces x Box	Sqm x Box	Weight x Box (Kg)	Boxes x Pal.	Sqm x Pal.	Weight x Pal. (Kg)
Reference	Format (cm)	Epaisseur (mm)	Pcs / M <sup>2</sup>	Pcs / Bte	M <sup>2</sup> / Bte	Poids / Bte (Kg)	Bte / Pal.	M <sup>2</sup> / Pal.	Poids / Pal. (Kg)
Artikel	Format (cm)	Stärke (mm)	Stk. x Qm	Stk. x Krt.	Qm x Krt.	Gewicht x Krt. (Kg)	Krt. x Pal.	Qm x Pal.	Gewicht x Pal. (Kg)
Artículo	Tamaño (cm)	Espesor (mm)	Pzs x Mc.	Pzs x Caja	Mc. x Caja	Peso x Caja (Kg)	Cajas x Pal.	Mc. x Pal.	Peso x Pal. (Kg)
Артикула	Формат (cm)	Толщина (mm)	Шт. x Кв.М.	Шт. x Кор.	Кв.М. x Кор.	Вес x Кор. (Kg)	Кор. x Подд.	Кв.М x Подд.	Вес x Подд. (Kg)
804Z_R	80X80	10	1,56	2	1,280	32,00	40	51,20	1280
784Z_P	79X79	10	1,60	2	1,248	32,00	40	49,92	1280
944Z_R	45X90	10	2,47	3	1,215	28,70	30	36,45	861
934Z_P	44,4X89	10	2,53	3	1,185	28,70	30	35,55	861
604Z_R	60X60	10	2,78	3	1,080	25,00	40	43,20	1000
594Z_P	59X59	10	2,87	3	1,044	25,00	40	41,76	1000
634Z_R	30X60	10	5,56	6	1,080	25,00	40	43,20	1000
294Z_P	29,4X59	10	5,77	6	1,041	24,30	40	41,64	972
M634Z_R	30X60	10	5,56	4	0,720	16,70	30	21,60	501
M634Z_P	29,4X59	10	5,77	4	0,720	16,70	30	21,60	501
I304Z_R/P	30X30	10	11,11	5	0,450	10,45	-	-	-
Z304Z_R/P	30X30	10	11,11	5	0,450	10,45	-	-	-
R304Z_R/P	19,6X34,2	10	14,92	5	0,335	7,80	-	-	-

**EMIL**  
CERAMICA

<b>Emilceramica is a brand of Emilceramica S.r.l. a socio unico</b>	<b>Sede Commerciale/Amministrativa</b>
<a href="http://emilgroup.it/emilceramica">emilgroup.it/emilceramica</a> <a href="http://emilgroup.it">emilgroup.it</a>	Via Ghiarola Nuova, 29 - 41042 Fiorano Modenese (Mo) Italy T +39 0536 835111 - <a href="mailto:info@emilceramicagroup.it">info@emilceramicagroup.it</a> F (Italy) +39 0536 835958 - (Export) +39 0536 835490